

SCREEN FILTERS – Series 2000 & 2200

GENERAL INSTRUCTIONS

This filter has been designed and manufactured to achieve the highest standards of quality and finish. It is mainly used as a control filter in agriculture and turf, and is suitable for filtering small quantities of impurities at higher flow rates.

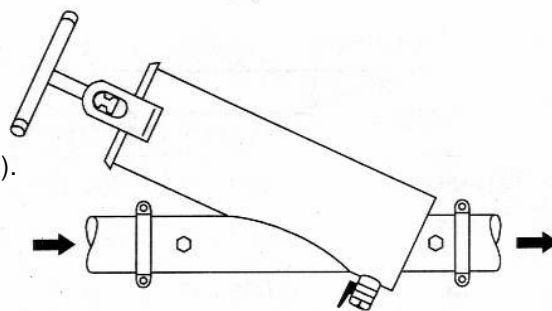
For best results, the filter must be installed, operated and maintained according to the following instructions.

INSTALLATION

- Install filter horizontally with its body pointing upwards, drain valve (9) should point downwards.
- Water inlet and outlet are marked clearly by arrows.
- If more than one filter is installed, leave sufficient space between the units to facilitate the maintenance.
- Specially designed **ODIS** manifolds (series 9000) are available for mounting multiple filter arrays.
- If pressure is not controlled effectively a pressure relief valve must be installed before filter's installation.

OPERATION

- Maximal operational pressure should not exceed 8 bar (120 psi).
- Filter is designed to withstand a maximum pressure of 10 bar (150 psi).
- Normal working conditions are obtained when the head-loss is less than 0.25 bar (4 psi), with clean screens.
- If head-loss exceeds 0.25 bar (4 psi), filter is partially clogged or operating under an excessive flow-rate.
- Verify head-loss by inserting a needle pressure gauge into pressure testing ports (8), at the filter's inlet and outlet.
- If head-loss is 0.7 bar (10 psi), open the drain valve (9) for 10 seconds. Check the head-loss again. If it remains 0.5 bar (7 psi), the screens should be removed for cleaning.



Warning: Do not tighten or open cover during operation or under pressure.

MANUAL FLUSHING

- Manual flushing is performed simply by opening drain valve (9) located at the filter's bottom.
- Check time required to reach a head-loss of 0.4 bar (6 psi).
- Open drain valve and flush filter for 10-30 seconds.
- Check pressure reading again, head loss should be 0.25 bar (4 psi) or less. If pressure remains above 0.5 bar (7psi), screens should be removed for cleaning.

PERIODIC CLEANING

- Close filter's inlet valve.
- Open drain valve (9), to release pressure and leave valve open to drain the filter.
- Remove filter's cover (3), by releasing the handle (1) or wing nuts whatever the model is. Wait until water stops running from drain valve (9).
- Remove screens (5, 6) with carefullly. Removing screens before all the water is drained may cause sediments to penetrate the irrigation system.
- Recommended cleaning of filter and checking of screens: every two weeks or when head-loss reaches bar (15 psi), and on completion of irrigation.

NOTE: If a bristle brush does not remove particles from screens, immerse screens in an acid/alkaline solution for some time, then rinse it thoroughly. Recommended solution: 1% - 2% Hydrochloric Acid (HCl), or 5% Sodium Hydroxide (NaOH).

WARNING: Chemicals manufacturer's safety instructions should be read before the using chemicals .

- Verify that filter's screens are intact.
- On models 2010-2040 verify that inner gasket (7) is placed with cutout, next to the drain valve (9).
- On models 2260-2280 verify that screen seals (11) are intact.
- Place screens (5, 6) carefully into filter's body.
- Verify that top of both screens are leveled with top of filter's body. Place cover (3), so that cover's gasket (4) fits over the screens and centers them.
- Mount tightening bracket (2) and tighten the handle (1) or the wing nuts whatever the model is.

END OF IRRIGATION SEASON

- Perform all the instructions in the section “Periodic cleaning”. Dry filter till next season.

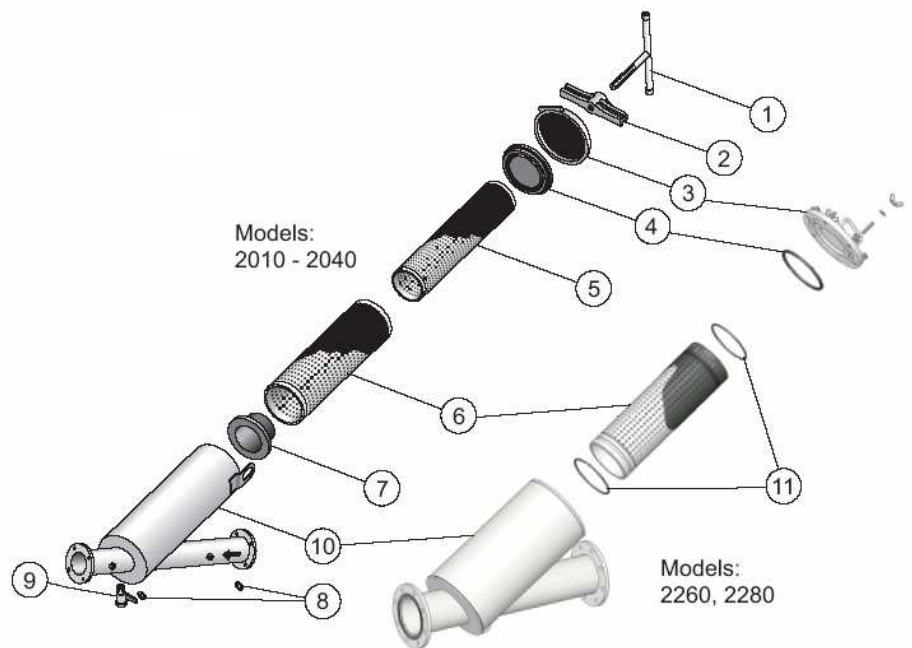
MAINTENANCE

- Each filter is supplied with instructions for maintenance, installation and operation.
- Apply a layer of grease to the handle’s (1) threads or the bolts, once a year.
- Any damage to filter’s protective coating must be repaired at once. Prior to the application of the protective paint, clean thoroughly the damaged area with a wire brush.



ILLUSTRATED PARTS BREAKDOWN

| Recommended Flow Rate | | | | |
|-----------------------|-------------------------|-----|---------------------------------|--------|
| Model | Inlet / outlet Diameter | | Recommended Flow rate- up to... | |
| | inch | mm | m ³ / h | US gpm |
| 2010 | 1 | 25 | 7 | 31 |
| 2015 | 1½ | 40 | 15 | 65 |
| 2020 | 2 | 50 | 30 | 130 |
| 2030 | 3 | 80 | 40 | 180 |
| 2040 | 4 | 100 | 80 | 350 |
| 2260 | 6 | 150 | 180 | 800 |
| 2280 | 8 | 200 | 300 | 1320 |



CATALOG NUMBERS

| Part no. | Description | Model | | | | | | |
|----------|-----------------------|------------|-------------|------------|------------|------------|------------|------------|
| | | 2010 (1") | 2015 (1.5") | 2020 (2") | 2030 (3") | 2040 (4") | 2260 (6") | 2280 (8") |
| 1 | Handle | E 000101 | E 000101 | E 000100 | E 000100 | E 000100 | - | - |
| 2 | Tightening bracket | E 000214 | E 000214 | E 000216 | E 000216 | E 000218 | - | - |
| 3 | Cover | E 000240 | E 000240 | E 000260 | E 000260 | E 000280 | E 220291 | E 220291 |
| 4 | Cover gasket | E 001340 | E 001340 | E 001360 | E 001361 | E 001380 | ER 02004 | ER 02004 |
| 5 | Inner screen* | - | - | E 000401 | E 000404 | E 000405 | - | - |
| 6 | Outer screen* | E 000434 | E 000401 | E 000411 | E 000412 | E 000413 | E 220425 | E 220426 |
| 7 | Inner gasket | E 001345 | E 001345 | E 001365 | E 001366 | E 001385 | - | - |
| 8 | Pressure testing port | - | E 000800 | E 000800 | E 000800 | E 000800 | E 000800 | E 000800 |
| 9 | Drain valve | PM 1050120 | PM 1050120 | PM 1075020 | PM 1075020 | PM 1075020 | PM 1150010 | PM 1150010 |
| 10 | Filter body | A 2010 | A 2015 | A 2020 | A 2030 | A 2040 | A 2260 | A 2280 |
| 11 | Screen Seal | - | - | - | - | - | ER02025 | ER02025 |

- When ordering screen, please specify screen mesh or “micron”.
- When ordering Filter body, please specify end connections: Thread (M)/ Flange (F)/ Victaulic (V).
- Models 2010, 2015, 2260, 2280 contains one screen only.

20 Hayetsira st. P.O.B. 3137 Kiriya Arye, Petach Tikva 49130 ISRAEL
Tel. 972-3-9258500, Fax. 972-3-9249023 E-mail: odis@odis.co.il Web Site: www.odis.co.il